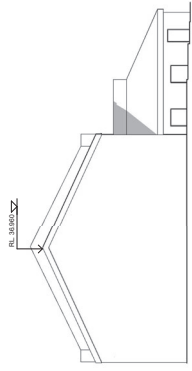
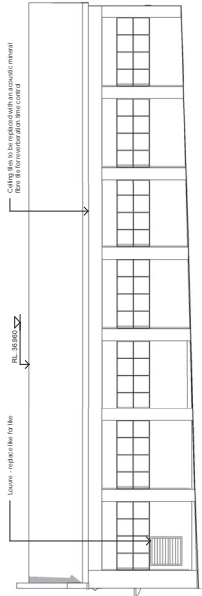


Attachment E

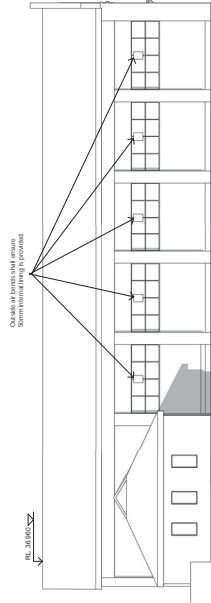
**Architectural Drawings
(Heritage Works Drawings and Draft Plan of
Subdivision)**



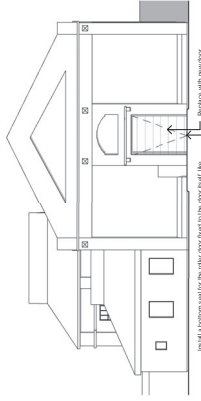
1 Pump House - North
1:200



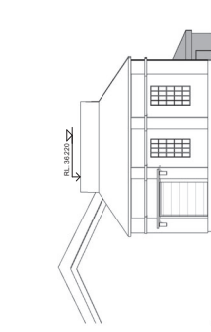
3 Pump House - East
1:200



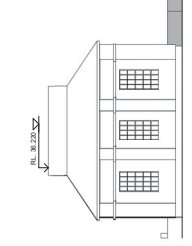
2 Pump House - West
1:200



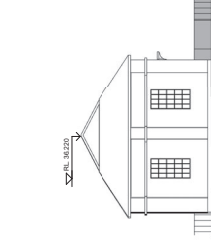
4 Pump House - South
1:200



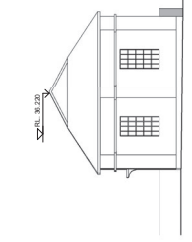
5 Valve House - North
1:200



7 Valve House - South
1:200

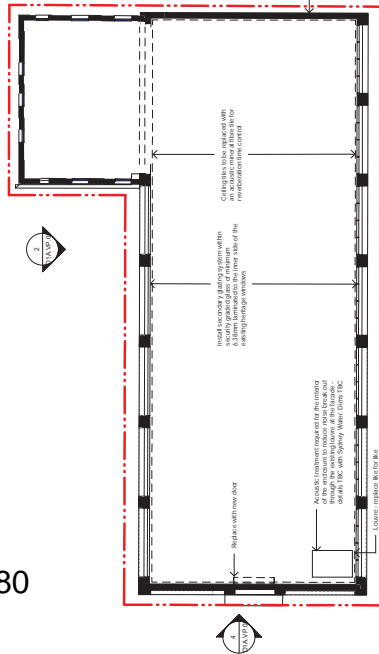


6 Valve House - East
1:200

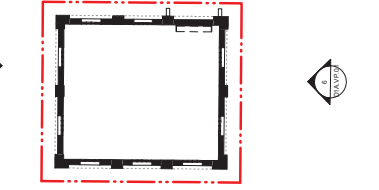


8 Valve House - West
1:200

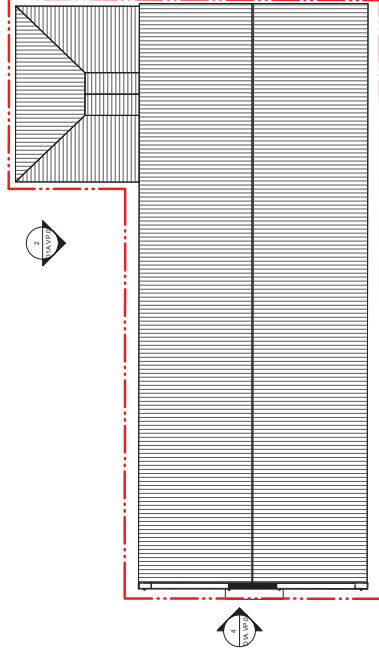
380



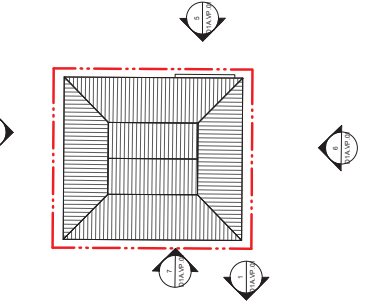
9 Valve & Pump House - Floor Plan
1:200



10 Valve House - Floor Plan
1:200



11 Pump House - Roof Plan
1:200



12 Valve House - Roof Plan
1:200

Dahua
903 Bourke Street Waterloo

Valve & Pump House

Scale	1:200	@ A1
Drawn	Author	Checked
Project no.	512376	Checker
Sheet	Design Application	
Proj. Date	27/10/2013 14:13 PM	
BM		



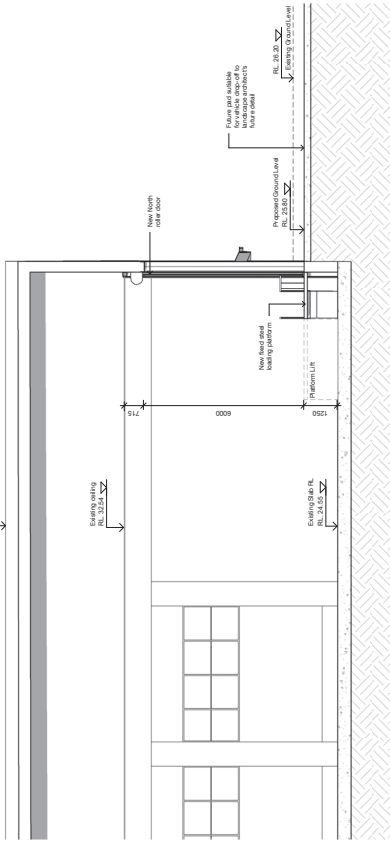
All drawings are the property of Bates Smart Pty Ltd. No part of this drawing may be reproduced, stored in a retrieval system, or transmitted in any form or by any means, electronic, mechanical, photocopying, recording, or by any information storage and retrieval system, without the prior written permission of Bates Smart Pty Ltd.

Bates Smart Pty Ltd
Level 11, 111 Bourke Street
Sydney NSW 2000 Australia
T 02 8644 6000 F 02 8644 6000
www.bates-smart.com.au
http://www.bates-smart.com.au

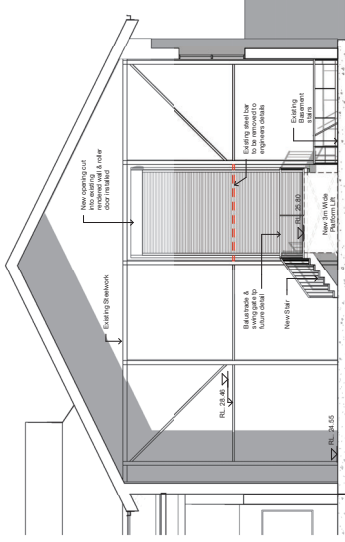
Approved by: [Signature] Date: [Date]

BATESSMART.

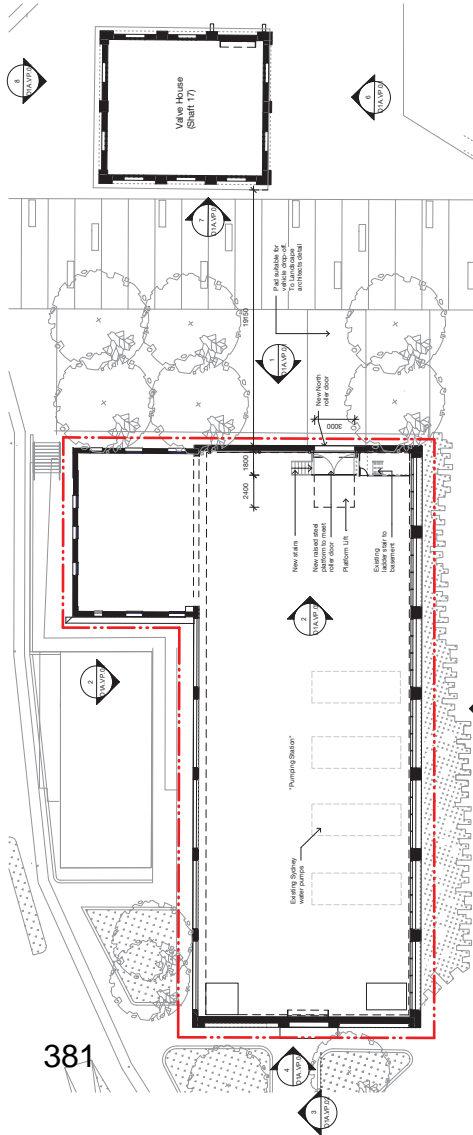
D1A.VP.01 A



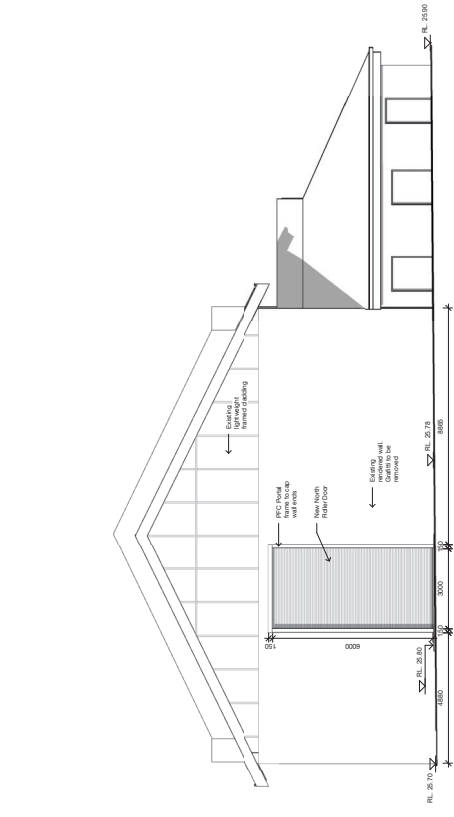
3 North Roller Door Section
1:100



2 Main Hall Internal Elevation
1:100



1 Valve & Pump House - Floor Plan Update
1:200



4 Pump House - North Roller Update
1:100



PHOTOGRAPH OF EXISTING ROLLER DOOR
NORTH ELEVATION TO REFERENCE



PVC DOOR FRAME (FINISH DELIVERED TO SITE BY BATESSMART)



ROLLER DOOR FROM DELIVERED TO SITE BY BATESSMART

Dahua
903 Bourke Street Waterloo
Pumping Station

Roller Door Addition to Northern Elevation

This drawing is the property of Bates Smart Architects Pty Ltd. It is to be used only for the project and site for which it is prepared. It is not to be used for any other project or site without the written consent of Bates Smart Architects Pty Ltd. Bates Smart Architects Pty Ltd is not responsible for any errors or omissions in this drawing. Bates Smart Architects Pty Ltd is not responsible for any damage or loss of any kind arising from the use of this drawing. Bates Smart Architects Pty Ltd is not responsible for any delay or interruption of any kind arising from the use of this drawing. Bates Smart Architects Pty Ltd is not responsible for any cost or expense of any kind arising from the use of this drawing. Bates Smart Architects Pty Ltd is not responsible for any liability of any kind arising from the use of this drawing. Bates Smart Architects Pty Ltd is not responsible for any loss of any kind arising from the use of this drawing. Bates Smart Architects Pty Ltd is not responsible for any injury of any kind arising from the use of this drawing. Bates Smart Architects Pty Ltd is not responsible for any death of any kind arising from the use of this drawing. Bates Smart Architects Pty Ltd is not responsible for any loss of any kind arising from the use of this drawing. Bates Smart Architects Pty Ltd is not responsible for any injury of any kind arising from the use of this drawing. Bates Smart Architects Pty Ltd is not responsible for any death of any kind arising from the use of this drawing.

Scale	As Indicated	@ A1	Checked	DS
Drawn	MK			
Project No.	S12376			
Sheet	Design Application			
Print Date	27/03/22 4:04 PM			
BM				

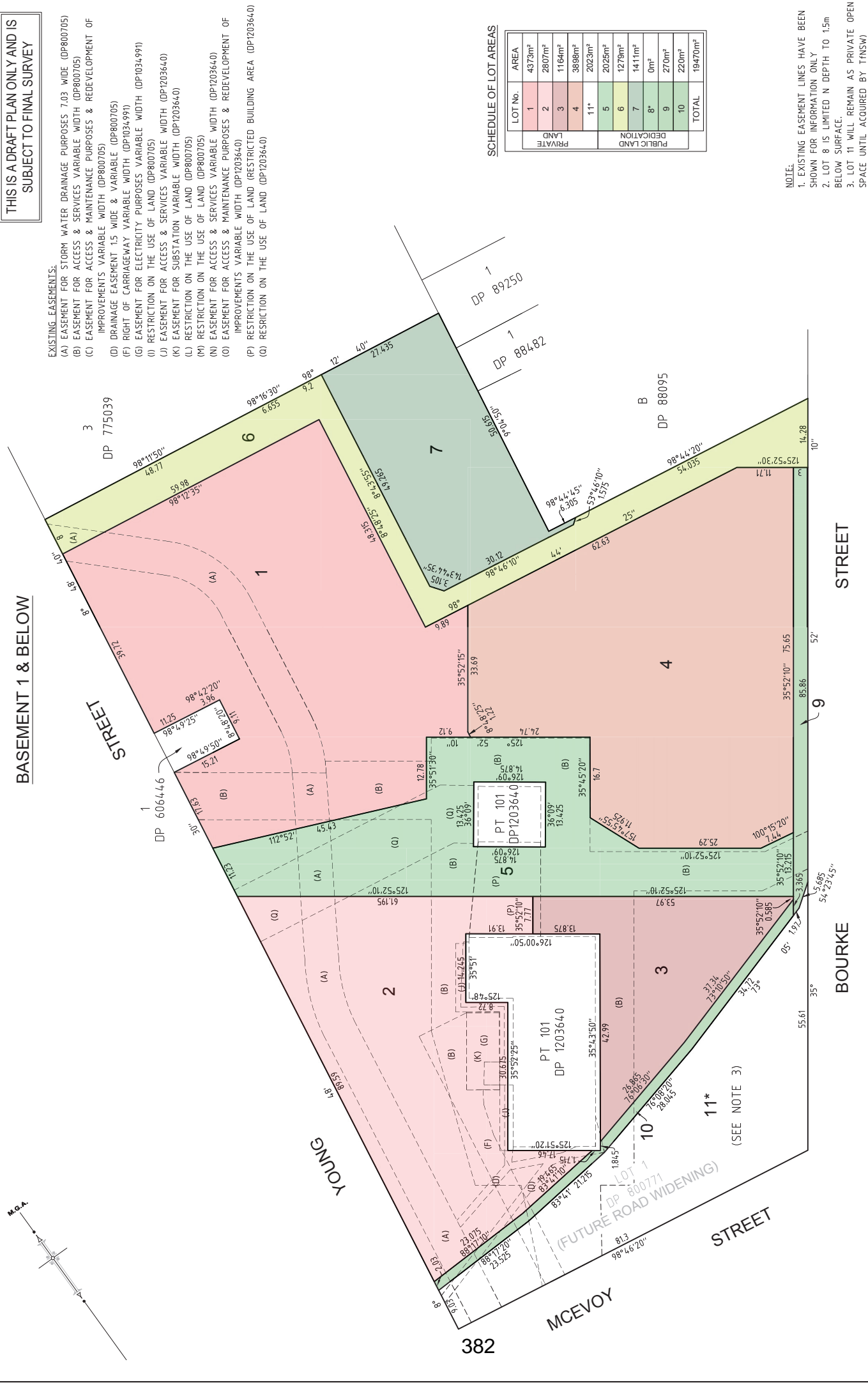
D1A.VP.02
Revision
A

Bates Smart Architects Pty Ltd
Level 15, 150 York Street
Sydney NSW 2000 Australia
Phone: +61 (0)2 9232 3333
Fax: +61 (0)2 9232 3334
www.bates-smart.com.au

Bates Smart Architects Pty Ltd
Level 15, 150 York Street
Sydney NSW 2000 Australia
Phone: +61 (0)2 9232 3333
Fax: +61 (0)2 9232 3334
www.bates-smart.com.au

BATESSMARTTM

THIS IS A DRAFT PLAN ONLY AND IS SUBJECT TO FINAL SURVEY



- EXISTING EASEMENTS:
- (A) EASEMENT FOR STORM WATER DRAINAGE PURPOSES 7.03 WIDE (DP800705)
 - (B) EASEMENT FOR ACCESS & SERVICES VARIABLE WIDTH (DP800705)
 - (C) EASEMENT FOR ACCESS & MAINTENANCE PURPOSES & REDEVELOPMENT OF IMPROVEMENTS VARIABLE WIDTH (DP800705)
 - (D) DRAINAGE EASEMENT 15 WIDE & VARIABLE (DP800705)
 - (E) RIGHT OF CARRIAGEWAY VARIABLE WIDTH (DP1034991)
 - (F) EASEMENT FOR ELECTRICITY PURPOSES VARIABLE WIDTH (DP1034991)
 - (G) RESTRICTION ON THE USE OF LAND (DP800705)
 - (H) EASEMENT FOR ACCESS & SERVICES VARIABLE WIDTH (DP1203640)
 - (I) RESTRICTION ON THE USE OF LAND (DP800705)
 - (J) RESTRICTION ON THE USE OF LAND (DP800705)
 - (K) EASEMENT FOR ACCESS & SERVICES VARIABLE WIDTH (DP1203640)
 - (L) RESTRICTION ON THE USE OF LAND (DP800705)
 - (M) RESTRICTION ON THE USE OF LAND (DP800705)
 - (N) EASEMENT FOR ACCESS & SERVICES VARIABLE WIDTH (DP1203640)
 - (O) EASEMENT FOR ACCESS & MAINTENANCE PURPOSES & REDEVELOPMENT OF IMPROVEMENTS VARIABLE WIDTH (DP1203640)
 - (P) RESTRICTION ON THE USE OF LAND (RESTRICTED BUILDING AREA (DP1203640))
 - (Q) RESTRICTION ON THE USE OF LAND (DP1203640)

SCHEDULE OF LOT AREAS

LOT No.	AREA
1	4373m ²
2	2807m ²
3	1164m ²
4	3898m ²
11*	2023m ²
5	2025m ²
6	1279m ²
7	1411m ²
8*	0m ²
9	270m ²
10	220m ²
TOTAL	19470m ²

- NOTE:
1. EXISTING EASEMENT LINES HAVE BEEN SHOWN FOR INFORMATION ONLY
 2. LOT 8 IS LIMITED IN DEPTH TO 1.5m BELOW SURFACE.
 3. LOT 11 WILL REMAIN AS PRIVATE OPEN SPACE UNTIL ACQUIRED BY TfNSW)

BASEMENT 1 & BELOW

Registered
LTS
Landscape Architecture & Surveying
www.lts.com.au | P 2345 678 900

DP DRAFT
ISSUE FOR REVIEW: 25-10-2022

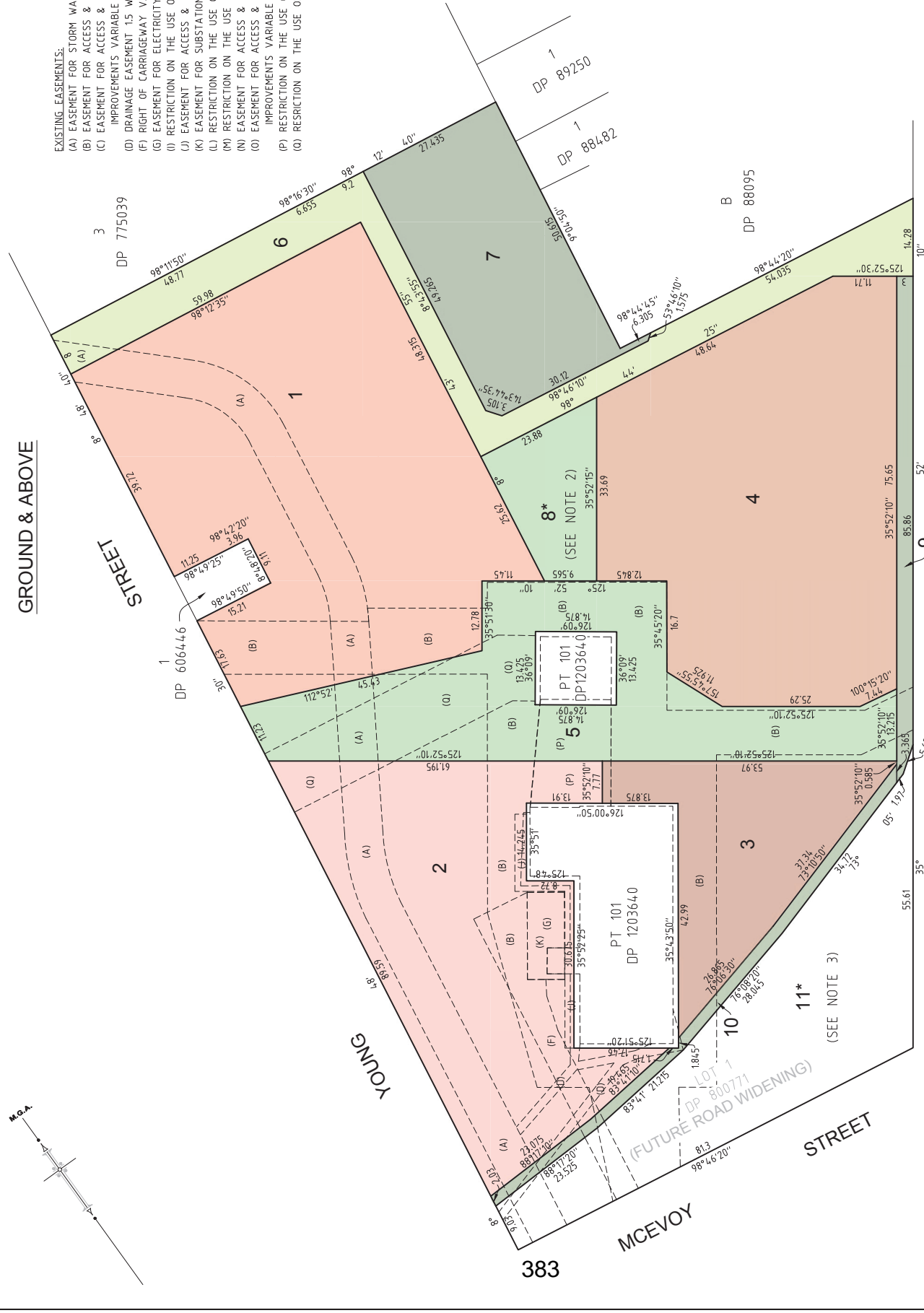
Registered
LGA: SYDNEY
Locality: WATERLOO
Reduction Ratio 1: 500
Lengths are in metres.

PLAN OF PROPOSED SUBDIVISION OF LOT 102 IN DP 1203640

SURVEYOR
Name: DAMIAN JOSEPH IMAGUIRE
Date of Survey: DRAFT ONLY
Surveyor's Reference: 51740 001DP-A

THIS IS A DRAFT PLAN ONLY AND IS SUBJECT TO FINAL SURVEY

- EXISTING EASEMENTS:
- (A) EASEMENT FOR STORM WATER DRAINAGE PURPOSES 7.03 WIDE (DP800705)
 - (B) EASEMENT FOR ACCESS & SERVICES VARIABLE WIDTH (DP800705)
 - (C) EASEMENT FOR ACCESS & MAINTENANCE PURPOSES & REDEVELOPMENT OF IMPROVEMENTS VARIABLE WIDTH (DP800705)
 - (D) DRAINAGE EASEMENT 1.5 WIDE & VARIABLE (DP800705)
 - (E) RIGHT OF CARRIAGEWAY VARIABLE WIDTH (DP1034991)
 - (F) EASEMENT FOR ELECTRICITY PURPOSES VARIABLE WIDTH (DP1034991)
 - (G) RESTRICTION ON THE USE OF LAND (DP800705)
 - (H) EASEMENT FOR ACCESS & SERVICES VARIABLE WIDTH (DP1203640)
 - (I) RESTRICTION ON THE USE OF LAND (DP800705)
 - (J) RESTRICTION ON THE USE OF LAND (DP800705)
 - (K) EASEMENT FOR ACCESS & SERVICES VARIABLE WIDTH (DP1203640)
 - (L) RESTRICTION ON THE USE OF LAND (DP800705)
 - (M) RESTRICTION ON THE USE OF LAND (DP800705)
 - (N) EASEMENT FOR ACCESS & SERVICES VARIABLE WIDTH (DP1203640)
 - (O) EASEMENT FOR ACCESS & MAINTENANCE PURPOSES & REDEVELOPMENT OF IMPROVEMENTS VARIABLE WIDTH (DP1203640)
 - (P) RESTRICTION ON THE USE OF LAND (RESTRICTED BUILDING AREA (DP1203640))
 - (Q) RESTRICTION ON THE USE OF LAND (DP1203640)



SCHEDULE OF LOT AREAS

LOT No.	AREA
1	4285m ²
2	2807m ²
3	1164m ²
4	3519m ²
11*	2023m ²
5	2025m ²
6	1279m ²
7	1411m ²
8*	466m ²
9	270m ²
10	220m ²
TOTAL	19470m ²

NOTE:

1. EXISTING EASEMENT LINES HAVE BEEN SHOWN FOR INFORMATION ONLY. IT IS INTENDED TO RELEASE ALL EASEMENTS FROM FUTURE PUBLIC DOMAIN LOTS 5, 6-10 BELOW SURFACE.
2. LOT 8 IS LIMITED N DEPTH TO 1.5m
3. LOT 11 WILL REMAIN AS PRIVATE OPEN SPACE UNTIL ACQUIRED BY TNSW

GROUND & ABOVE

STREET

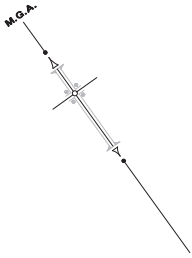
YOUNG STREET

MCEVOY STREET

BOURKE STREET

STREET

383



Registered



www.lts.com.au | P 2345 67 890

DP DRAFT

ISSUE FOR REVIEW: 25-10-2022

SURVEYOR

Name: DAMIAN JOSEPH MAMUIRE

Date of Survey: DRAFT ONLY

Surveyor's Reference: 51740 001DP-A

PLAN OF PROPOSED SUBDIVISION OF

LOT 102 IN DP 1203640

LGA: SYDNEY

Locality: WATERLOO

Reduction Ratio 1: 500

Lengths are in metres.